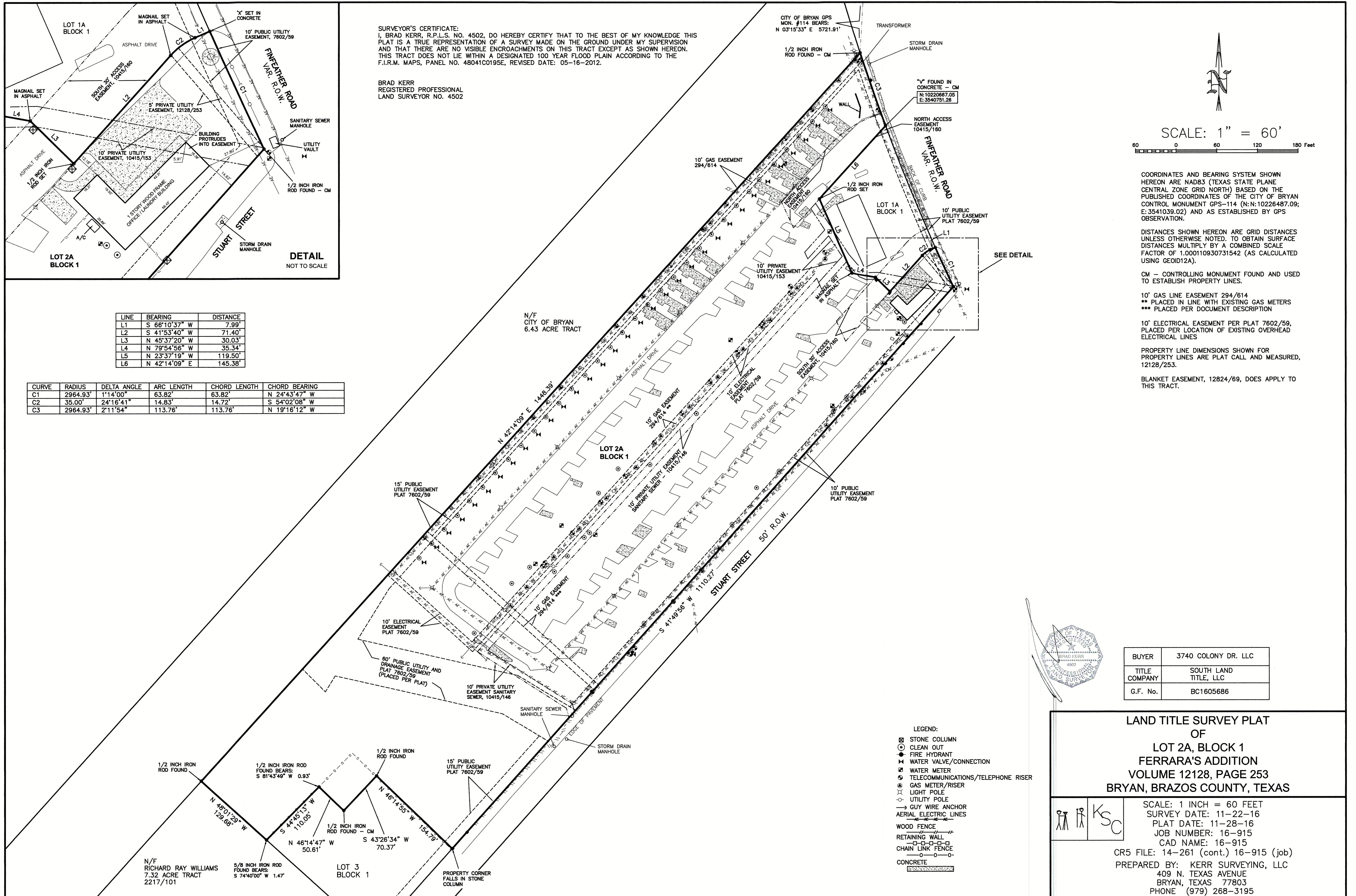


SURVEYOR'S CERTIFICATE:
I, BRAD KERR, R.P.L.S. NO. 4502, DO HEREBY CERTIFY THAT TO THE BEST OF MY KNOWLEDGE THIS PLAT IS A TRUE REPRESENTATION OF A SURVEY MADE ON THE GROUND UNDER MY SUPERVISION AND THAT THERE ARE NO VISIBLE ENCROACHMENTS ON THIS TRACT EXCEPT AS SHOWN HEREON. THIS TRACT DOES NOT LIE WITHIN A DESIGNATED 100 YEAR FLOOD PLAIN ACCORDING TO THE F.I.R.M. MAPS, PANEL NO. 48041C0195E, REVISED DATE: 05-16-2012.

BRAD KERR
REGISTERED PROFESSIONAL
LAND SURVEYOR NO. 4502

LINE	BEARING	DISTANCE
L1	S 66°10'37" W	7.99'
L2	S 41°53'40" W	71.40'
L3	N 45°37'20" W	30.03'
L4	N 79°54'56" W	35.34'
L5	N 23°37'19" W	119.50'
L6	N 42°14'09" E	145.38'

CURVE	RADIUS	DELTA ANGLE	ARC LENGTH	CHORD LENGTH	CHORD BEARING
C1	2964.93'	1°14'00"	63.82'	63.82'	N 24°43'47" W
C2	35.00'	24°16'41"	14.83'	14.72'	S 54°02'08" W
C3	2964.93'	2°11'54"	113.76'	113.76'	N 19°16'12" W



SCALE: 1" = 60'

0 60 120 180 Feet

COORDINATES AND BEARING SYSTEM SHOWN HEREON ARE NAD83 (TEXAS STATE PLANE CENTRAL ZONE GRID NORTH) BASED ON THE PUBLISHED COORDINATES OF THE CITY OF BRYAN CONTROL MONUMENT GPS-114 (N:10226487.09; E:3541039.02) AND AS ESTABLISHED BY GPS OBSERVATION.

DISTANCES SHOWN HEREON ARE GRID DISTANCES UNLESS OTHERWISE NOTED. TO OBTAIN SURFACE DISTANCES MULTIPLY BY A COMBINED SCALE FACTOR OF 1.000110930731542 (AS CALCULATED USING GEOID12A).

CM - CONTROLLING MONUMENT FOUND AND USED TO ESTABLISH PROPERTY LINES.

10' GAS LINE EASEMENT 294/614
** PLACED IN LINE WITH EXISTING GAS METERS
*** PLACED PER DOCUMENT DESCRIPTION

10' ELECTRICAL EASEMENT PER PLAT 7602/59, PLACED PER LOCATION OF EXISTING OVERHEAD ELECTRICAL LINES

PROPERTY LINE DIMENSIONS SHOWN FOR PROPERTY LINES ARE PLAT CALL AND MEASURED, 12128/253.

BLANKET EASEMENT, 12824/69, DOES APPLY TO THIS TRACT.